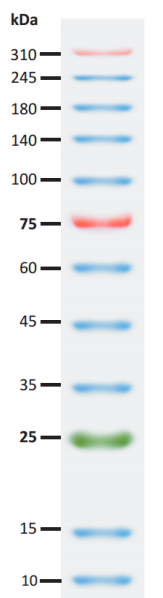


## PcioPrestain Protein ladder 310

### Product information:

PcioPrestain Protein ladder 310 is a prestained mixture of ten recombinant proteins ranging from 10kDa to 310kDa. Two different chromophores are bound to the proteins, producing a brightly colored ladder (see website for product images). The protein ladder is conveniently packaged and ready to use with no heating, diluting or additional reducing agent necessary.

Components	Cat.No.: A017-1	Cat. No.: AN017-2	storage
PcioPrestain Protein ladder 310	250µl	2x 250µl	-20°C



This product is intended for use by trained laboratory personnel only. It is important to follow proper laboratory safety protocols when handling this product. This includes wearing appropriate protective eyewear, clothing, and gloves to reduce the risk of exposure. In the event of contact with skin or eyes, rinse immediately with copious amounts of water and seek medical attention.

4-15% PAGE

### Storage buffer:

62.5mM Tris•H<sub>3</sub>PO<sub>4</sub> (pH 7.5 at 25°C), 1mM EDTA, 2% (w/v) SDS, 10mM DTT, 1mM Na<sub>3</sub>N and 33% (v/v) glycerol.

### Important Product Information

- Do not boil the protein ladder.
- The molecular weights of the proteins have a lot-to-lot variation of approximately 3%.
- In low-percentage gels (< 10%), the low-molecular weight proteins in the ladder may migrate with the dye front.
- The large proteins (> 100K) in the ladder may require longer transfer times or higher transfer voltages for Western blotting.
- The mobility of prestained proteins can vary in different SDS-PAGE buffer systems; however, they are suitable for approximate molecular weight determination when calibrated against unstained standards in the same system.

### Use procedure:

Thaw the ladder at room temperature. Do not boil protein ladder.

Mix gently and thoroughly to ensure that the solution is homogeneous.

Load an appropriate volume of the ladder onto the gel.

Mini-gel: 5µL per well (0.75-1.0mm thick) or 10µL per well (1.5mm thick)

Large gel: 10µL per well (0.75-1.0mm thick) or 20µL per well (1.5mm thick)

Return the unused protein ladder to -20°C for up to one year or 4°C for up to three months.

### Shipping and storage:

Upon receiving the product, store the product at suggested conditions. -20°C constant temperature for long-term storage, 4°C for three months; Avoid repeated freezing and thawing.

### Technical support:

If you have any questions or concerns, please don't hesitate to reach out to our support team at support@angneovo.no. Our knowledgeable and friendly team is available to assist you and ensure a positive experience with our product.

### Disclaimer And Warranty:

This product is compliant with its relevant specifications and intended for its stated purpose. However, ANGENOVO AS does not provide any other warranty or guarantee regarding the product's description or quality. Any such warranties or guarantees are explicitly excluded to the fullest extent allowed by law. ANGENOVO AS will not be held liable for any special, incidental, indirect, multiple or consequential damages related to or arising from the use of this product. The liability of ANGENOVO AS will not be limited or excluded for death or personal injury caused by its negligence, fraud, or fraudulent misrepresentation or any matter where it would be illegal to exclude or restrict such liability.

ANGENOVO AS reserves the right to make changes, modifications, or updates to the information contained in this guide at any time, without prior notice. It is recommended to periodically check the ANGENOVO AS website for any updates or changes to the information provided in this guide.

For Research Use Only. For *in vitro* Use Only. Not for use in diagnostic procedures.